

CARTRIDGES & TIPS

JBC Cartridges with extended tip life

JBC is pleased to present an extensive overview of our cartridge range. Up to 400 cartridges and tips that last 5 times longer. The Cartridge is the essential part of any soldering tool and should offer:

Excellent Heat Transfer. The compact element reduces thermal barriers.

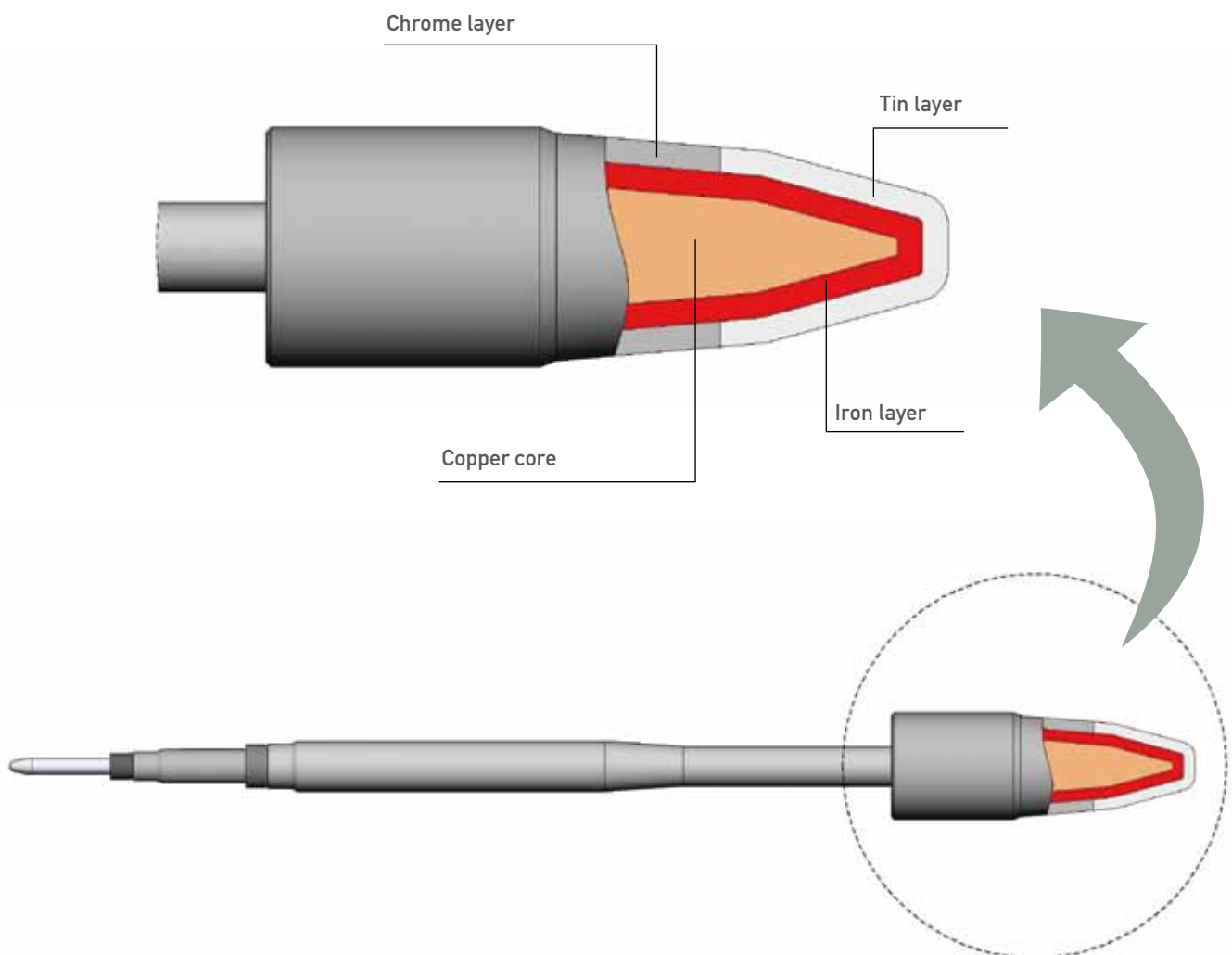
Instantaneous Heating Up. A fully integrated thermal sensor to the heater ensures a quick temp recovery.

Great Durability. The intelligent algorithm control program increases life.

The Cartridge range is growing since we are responding our client's specific needs. This means we cooperate closely with them in order to find the right solution.

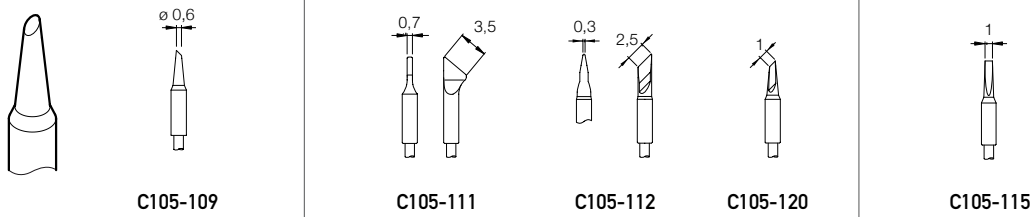
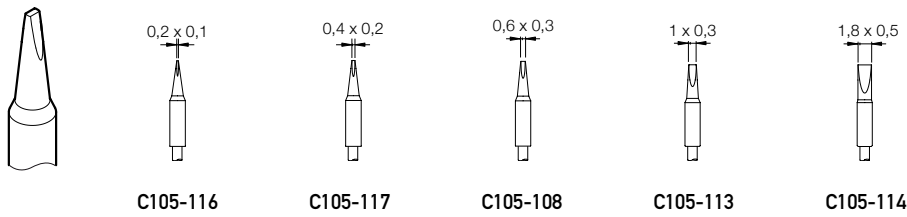
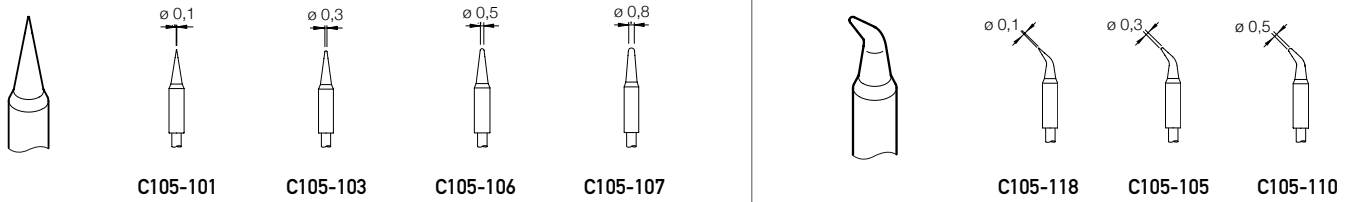
Don't hesitate to contact us if you don't find the desired cartridge in this catalogue.

We recommend you periodically check new models at www.jbctools.com.



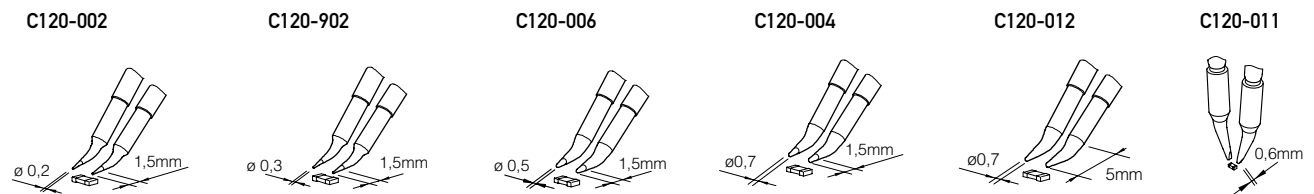
C105 Cartridges for NP105 and NT105 Nano Tools

E 1:1

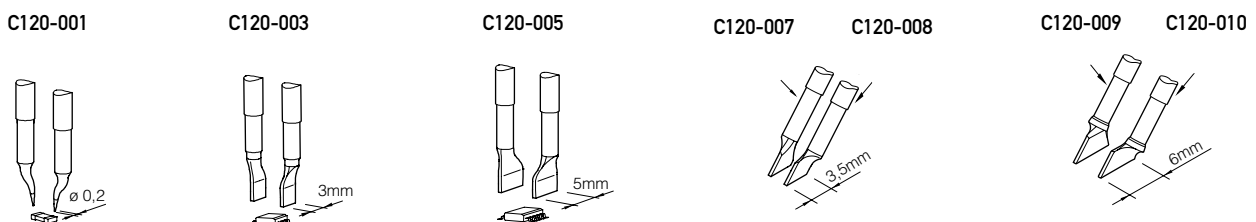


C120 Cartridges for PA120 Micro Tweezers

Chips Components

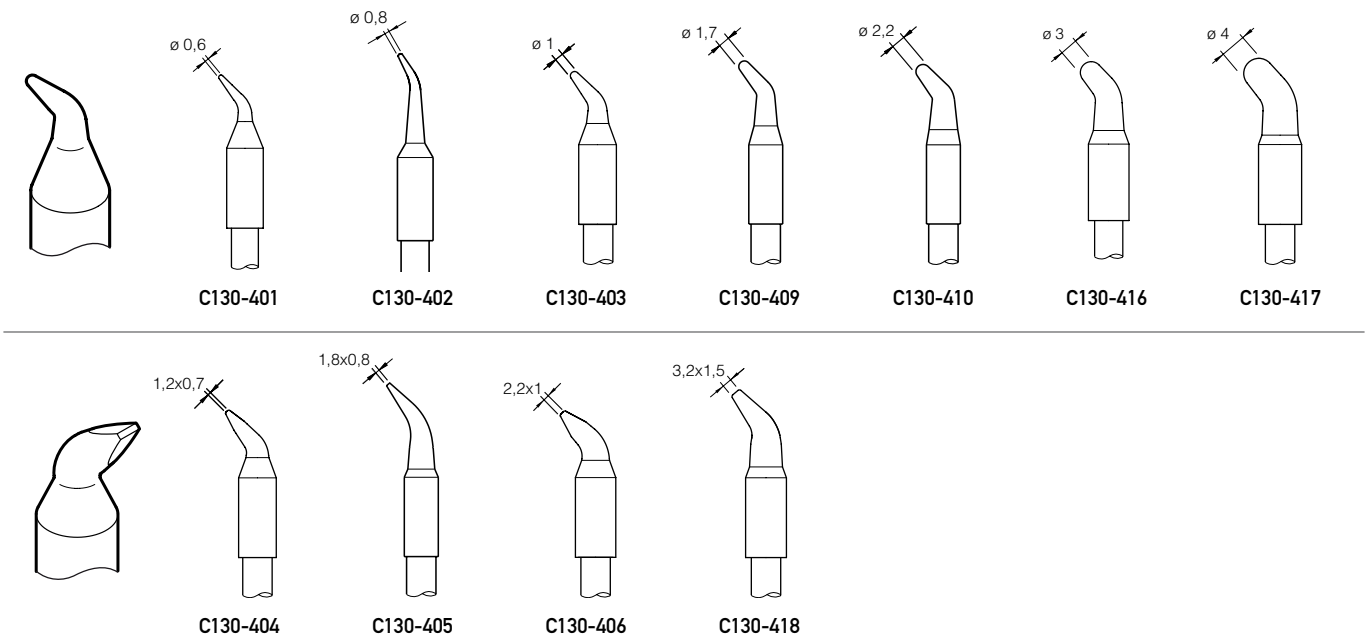


Dual in line



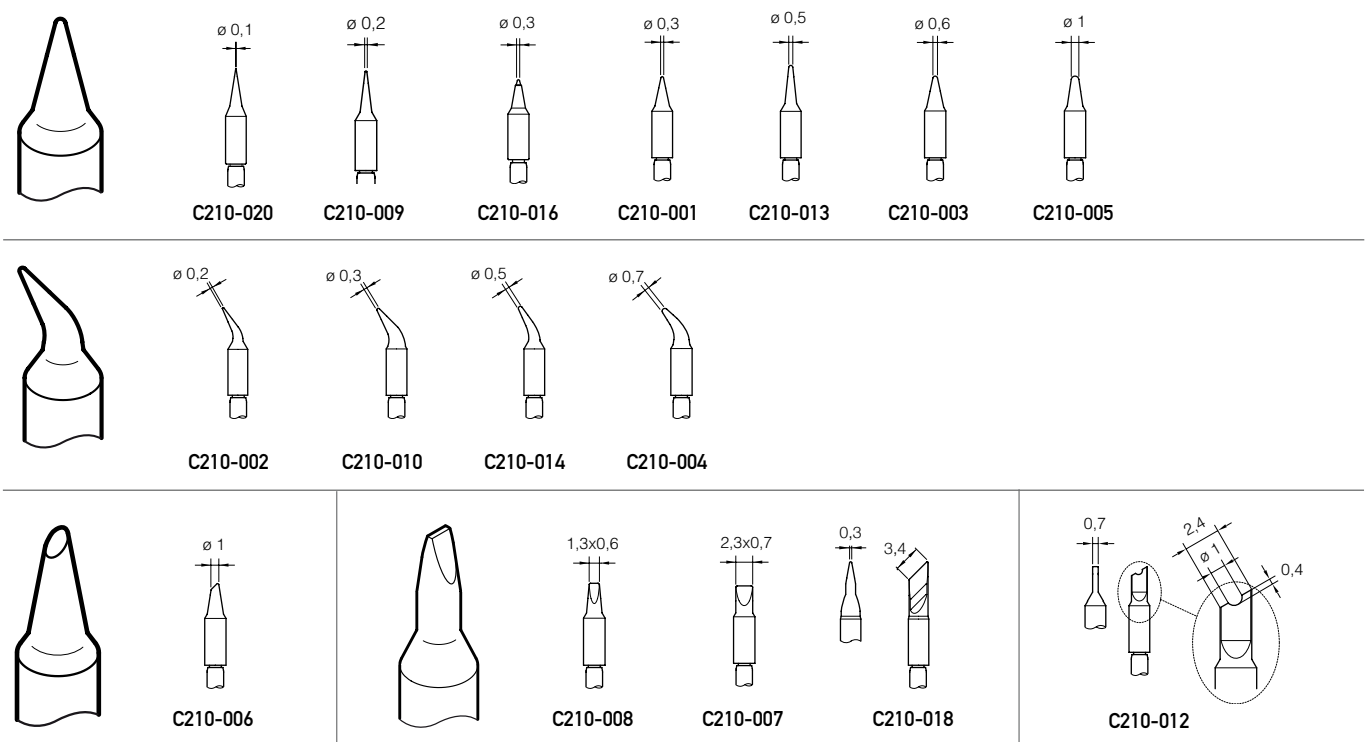
C130 Cartridges for AP130 Solder Feed Iron

E 1:1

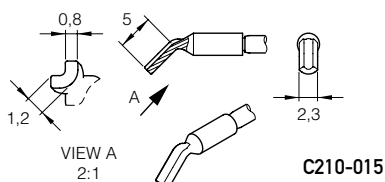


C210 Cartridges for T210 Precision Handpieces

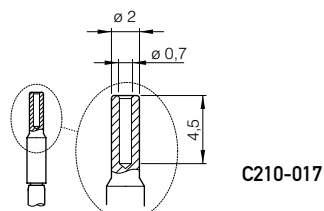
E 1:1



To solder inside a connector



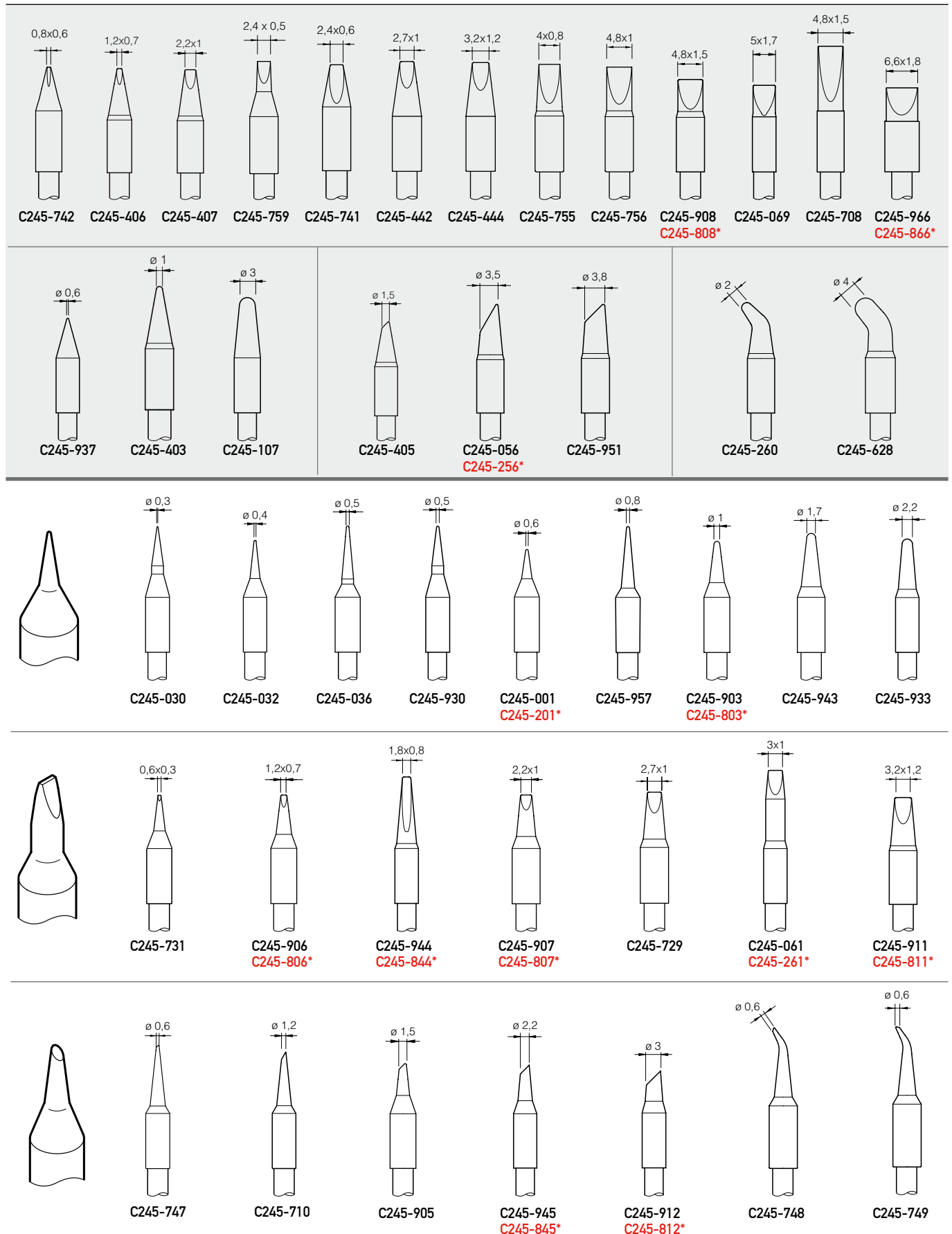
To solder through hole components on multilayer PCBs



C245 Cartridges for T245 Handpieces

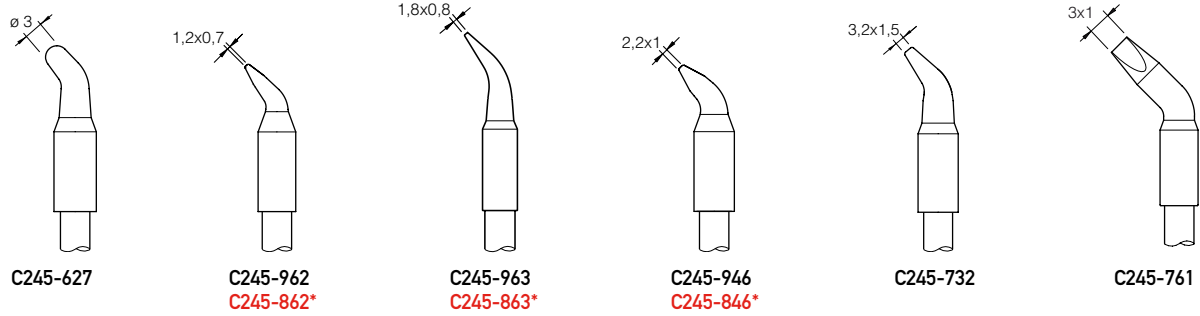
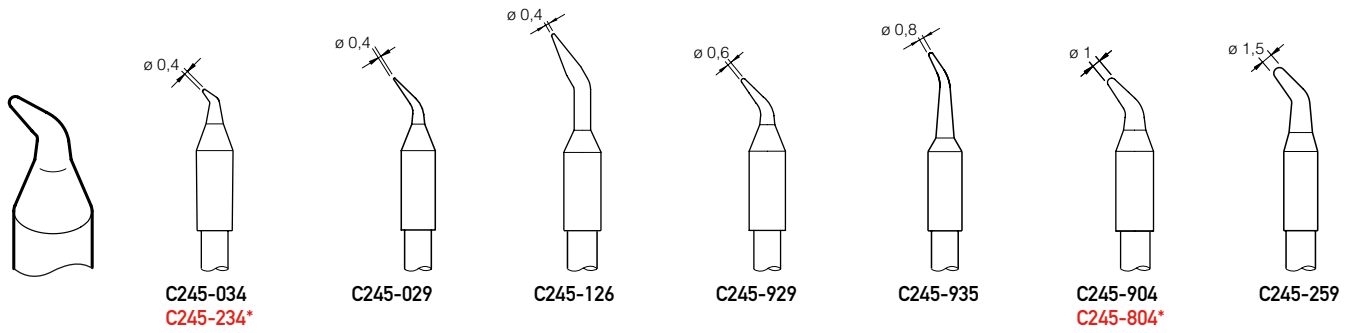
E 1:1

High Thermal Efficiency



C245 Cartridges for T245 Handpieces

E 1:1



Mini Spoon

C245-067

C245-938 ØA=3,8
 C245-931 ØA=2,7
 C245-965 ØA=1,9

QFP and PLCC

C245-227 A=17,5 B=17,5
 C245-315 A=15 B=15,0
 C245-228 A=12,4 B=15,0
 C245-224 A=12,0 B=12,0
 C245-223 A=8,5 B=8,5

Cartridges to solder SMT IC

QFP C245-009
PLCC C245-010

Blade type

C245-949 A=32
 C245-913 A=21
 C245-752 A=15
 C245-914 A=10

For PLCC sockets

C245-248
 N. of contact positions=32
 A=11,9 B=14,5

C245-247
 N. of contact positions=44
 A=17,0 B=17,0

Chip Components

C245-019 A=4,5
 C245-018 A=3,4
 C245-017 A=2,2
 C245-016 A=1,9

Bevel edge tips

C245-939
 C245-955

Dual in line

C245-226 A=15,2 B=29,0
 C245-215 A=9,6 B=18,0
 C245-304 A=9,6 B=15,0
 C245-305 A=9,6 B=12,0
 C245-306 A=9,6 B=10,0
 C245-222 A=7,1 B=13,0
 C245-303 A=6,5 B=6,0
 C245-221 A=5,4 B=10,0
 C245-250 A=5,4 B=8,0
 C245-220 A=5,4 B=6,0

Hoof tip with reduced tinned surface, ideal for touch-up:

C245-064
 C245-102

To solder inside a connector

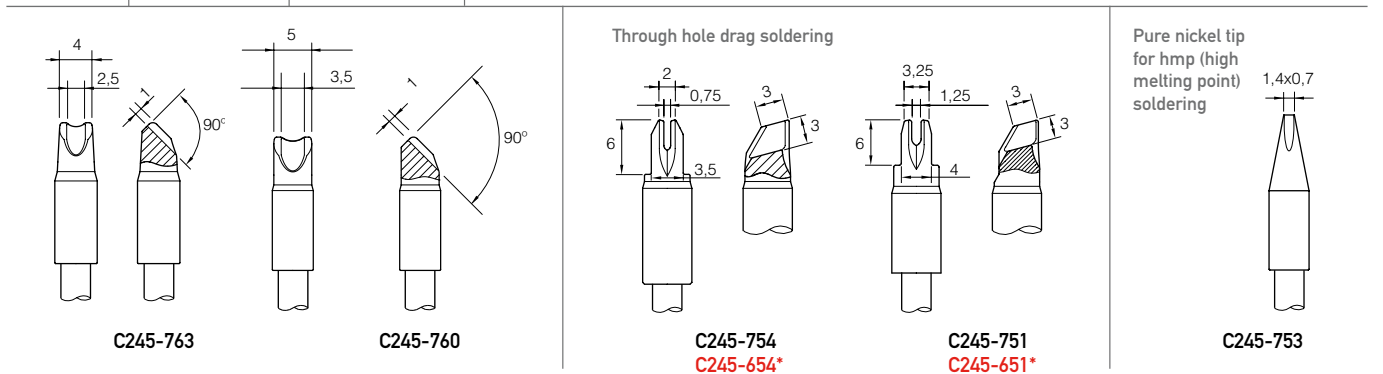
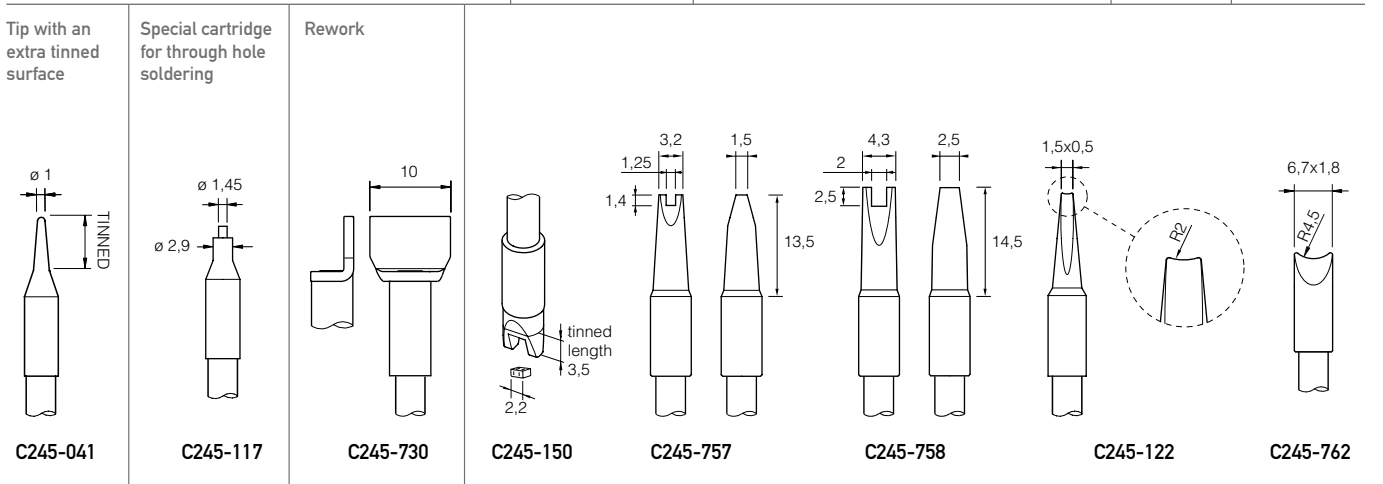
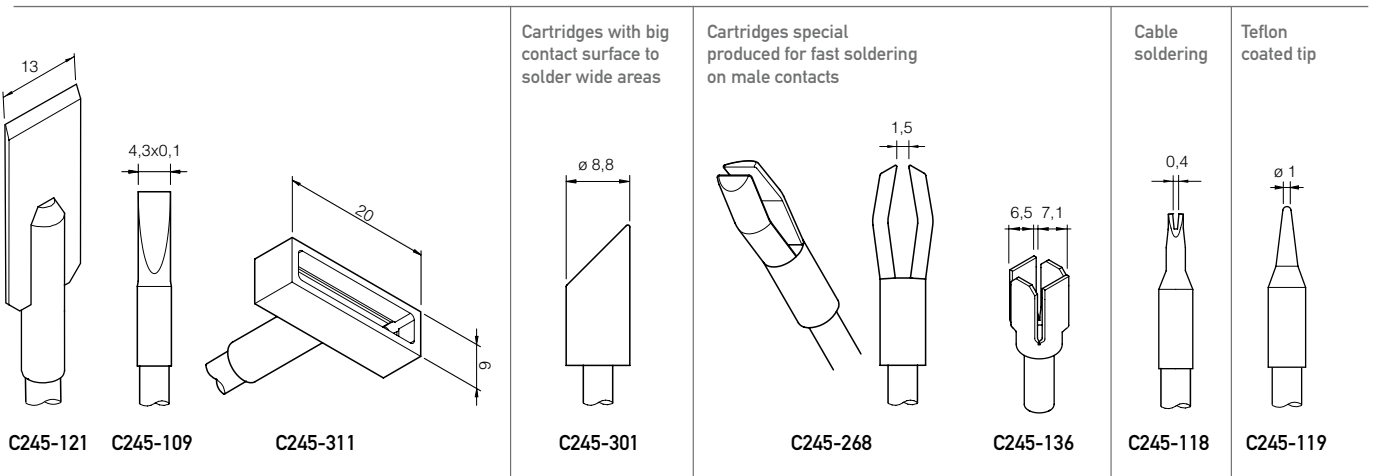
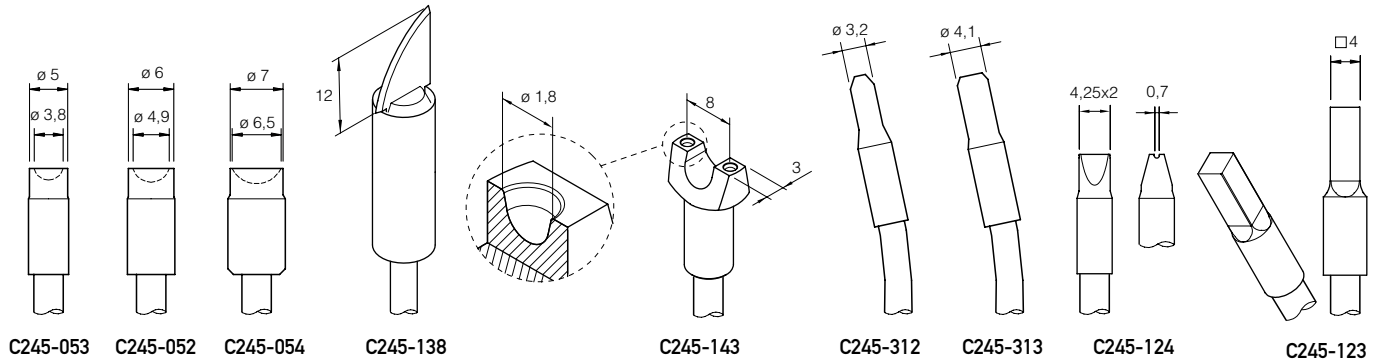
C245-116

*These cartridges are 20mm longer than normal cartridges for easy access to applications difficult to reach.

C245 Cartridges for T245 Handpieces

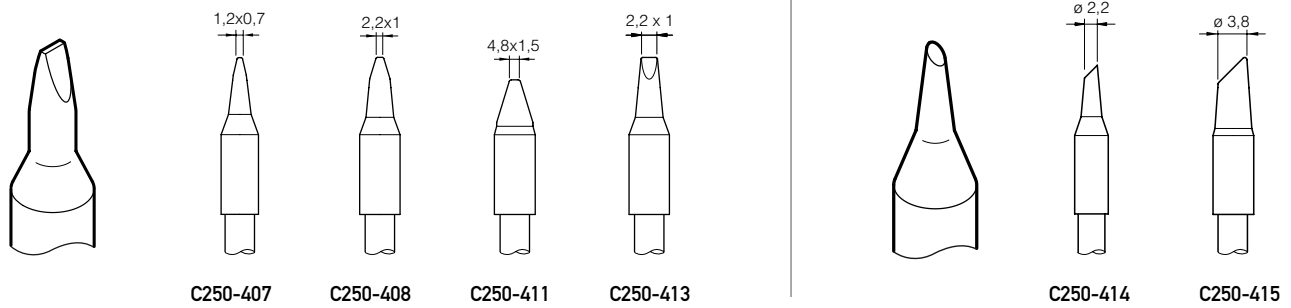
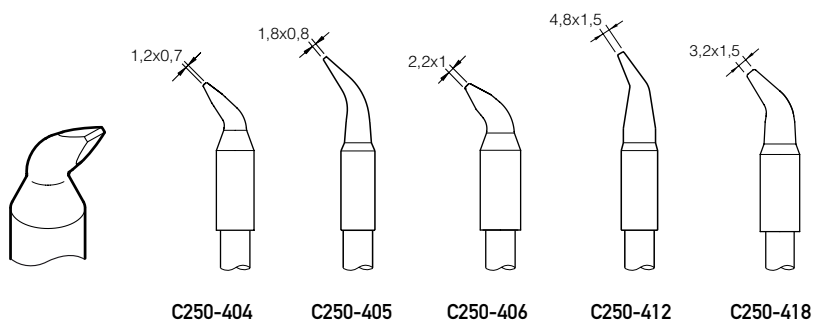
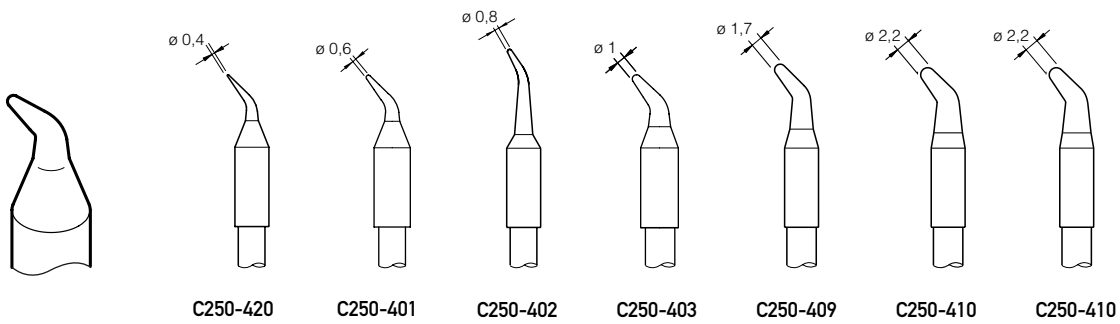
E 1:1

Cartridges with chrome finished, designed for use plastic rivets:



C250 Cartridges for AL250 Auto Feed Iron

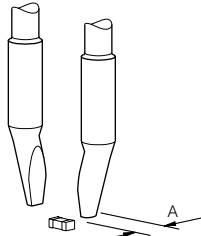
E 1:1



C420 Cartridges for HT420 Thermal Tweezers

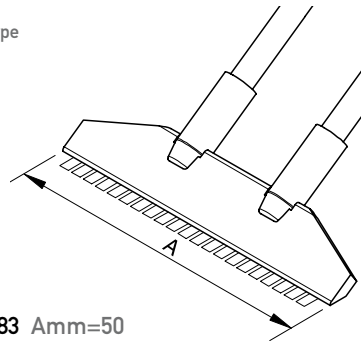
E 1:1

Chips Components



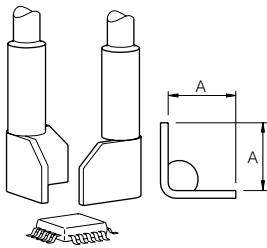
C420-271 Amm=1,5
C420-272 Amm=2,6

Blade type



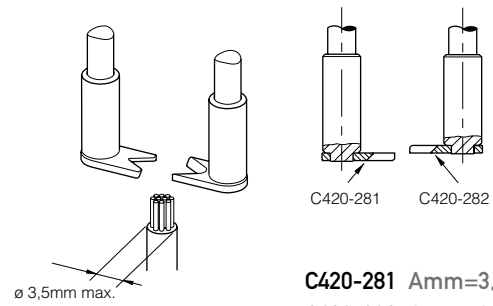
C420-283 Amm=50

QFP and PLCC



C420-279 Amm=8,0
C420-280 Amm=11,0

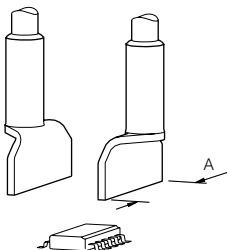
Cable stripper



C420-281 **C420-282**

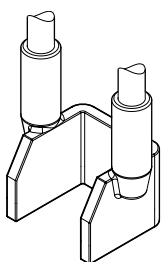
C420-281 Amm=3,5 max.
C420-282 Amm=3,5 max.

Dual in line

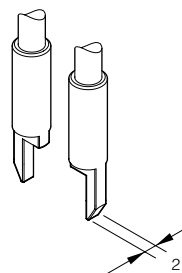
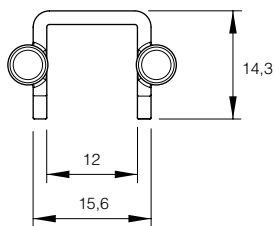


C420-273 Amm=4,0
C420-274 Amm=6,0
C420-275 Amm=8,0
C420-276 Amm=10,0
C420-277 Amm=15,0
C420-278 Amm=20,0
C420-285 Amm=22,0

Special Cartridges



C420-286

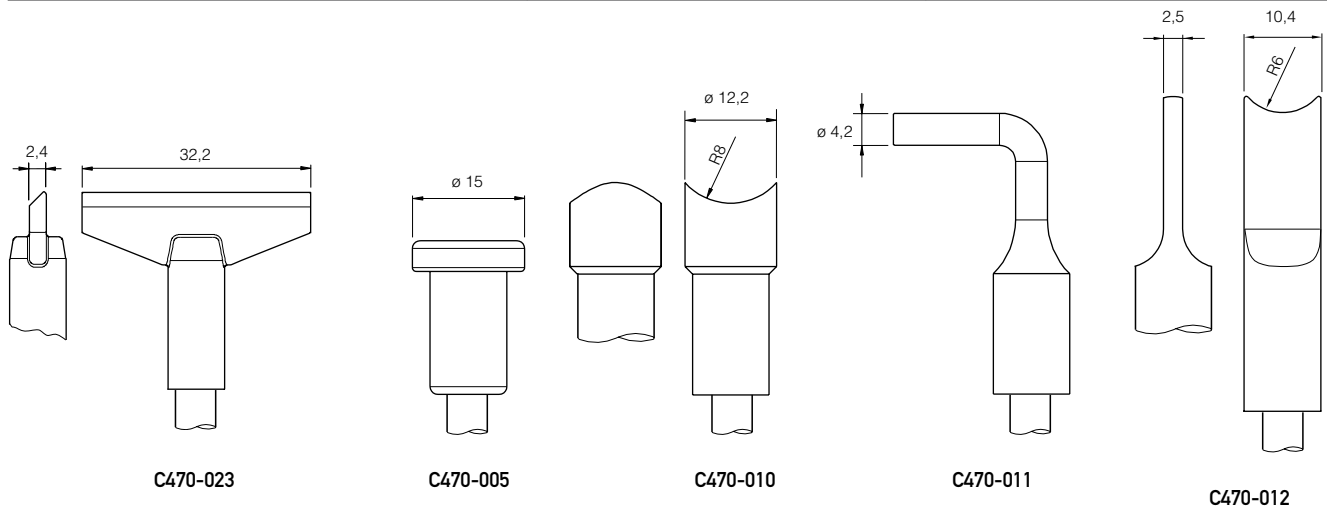
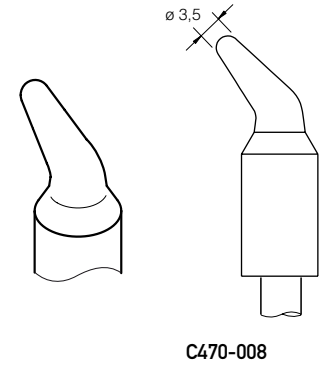
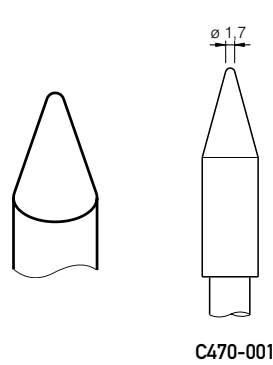
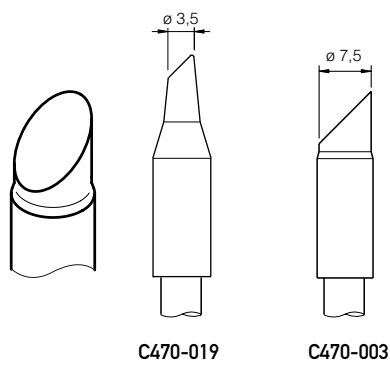
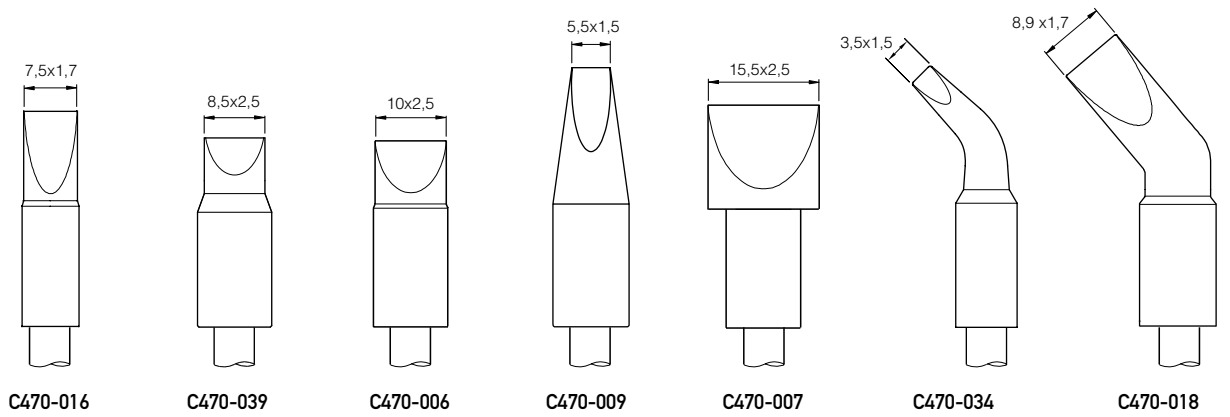
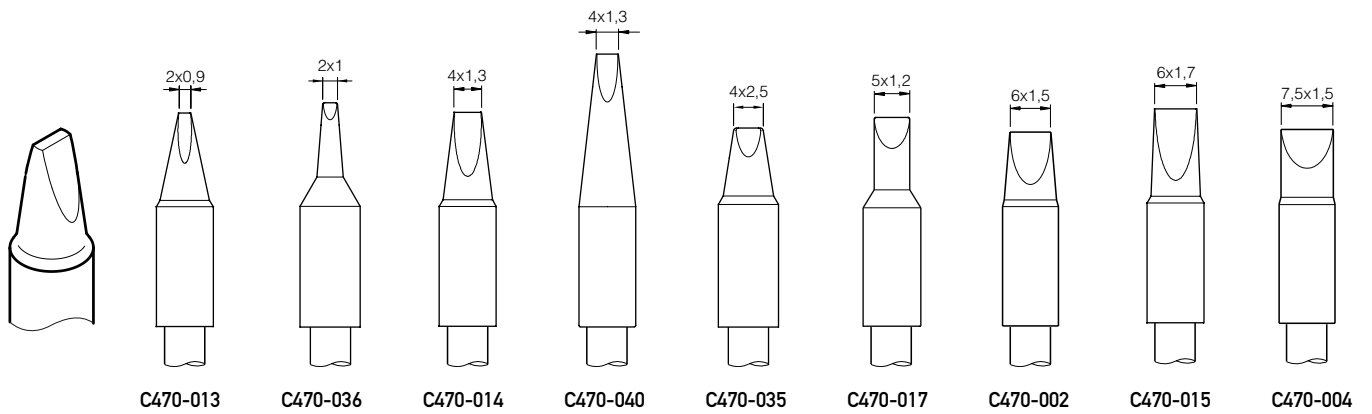


C420-287

Supplied individually

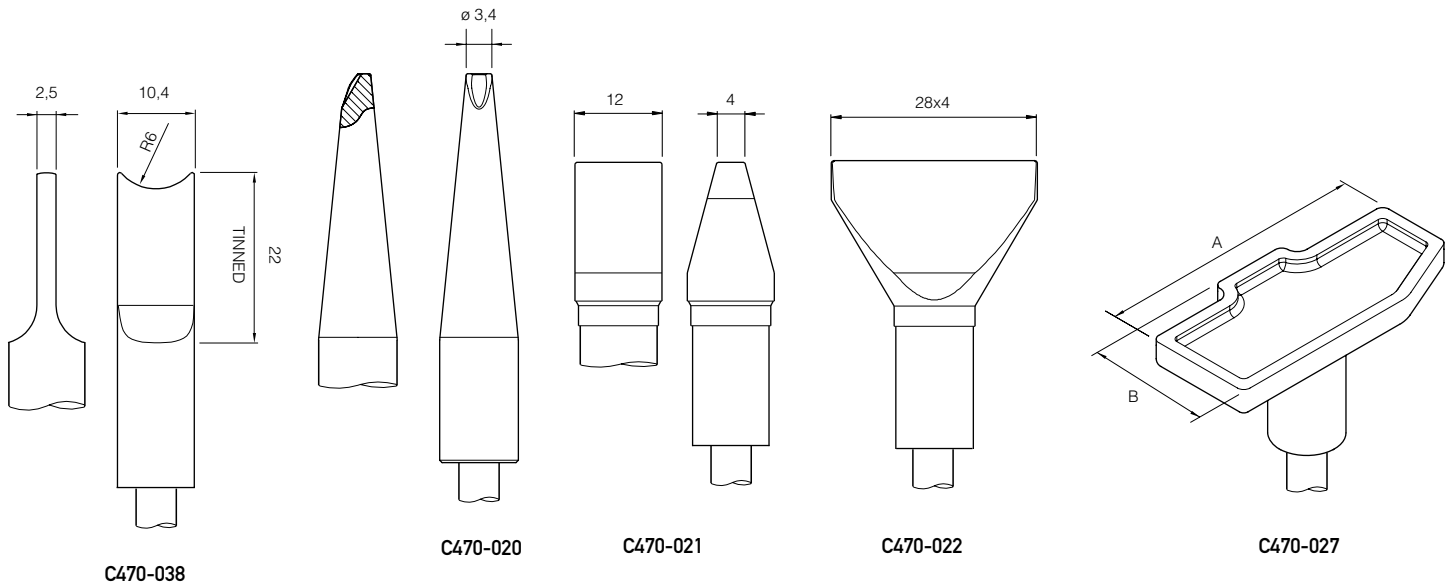
C470 Cartridges for T470 Comfort Handpieces

E 1:1

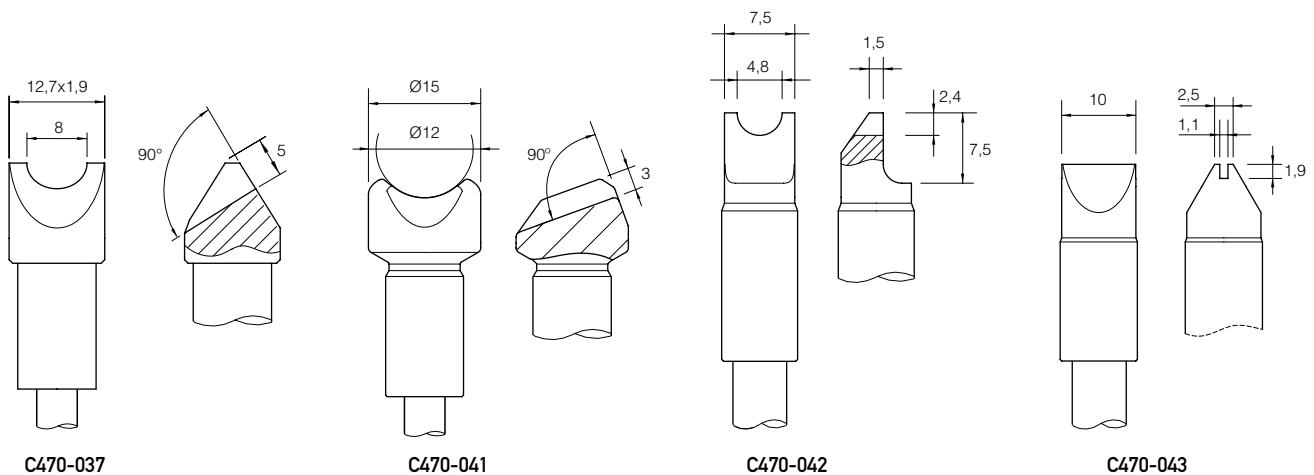
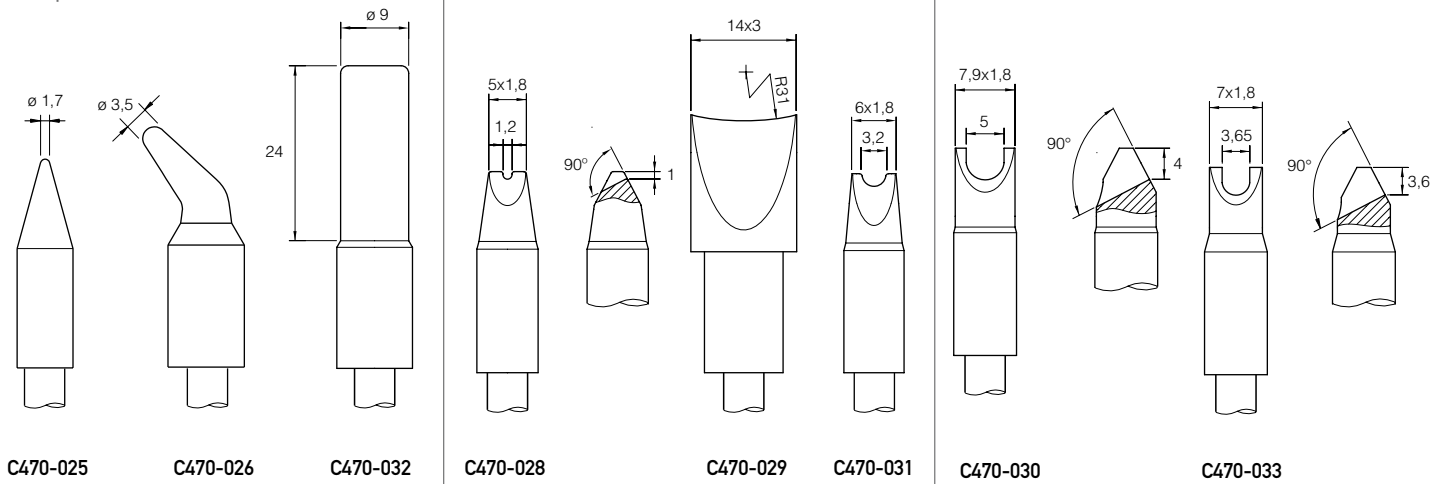


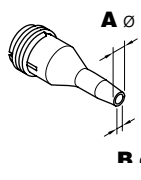
C470 Special Cartridges for T470 Comfort Handpieces

E 1:1



Cartridges with chrome finish, designed for use plastic rivets:

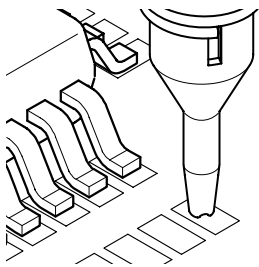


	<p>C360-001</p> <p>ØA=1 ØB=0,6 Ømax. pin=0,4</p>	<p>C360-002</p> <p>ØA=1,2 ØB=0,8 Ømax. pin=0,6</p>	<p>C360-003</p> <p>ØA=1,4 ØB=1 Ømax. pin=0,8</p>	<p>C360-004</p> <p>ØA=1,6 ØB=1,2 Ømax. pin=1</p>	<p>C360-007</p> <p>ØA=1,9 ØB=1,4 Ømax. pin=1,2</p>	<p>C360-006</p> <p>ØA=3 ØB=1,5 Ømax. pin=1,3</p>
---	---	---	---	---	---	---

Standard pad cleaning tip for DS360

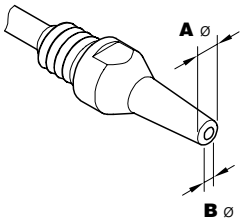
The pad cleaning tips feature a distinctive contact surface slit which offers circulation of suction air for easy pad cleaning.

<p>C360-011</p> <p>ØA=1 ØB=0,6</p>	<p>C360-012</p> <p>ØA=1,2 ØB=0,8</p>	<p>C360-013</p> <p>ØA=1,4 ØB=1</p>	<p>C360-014</p> <p>ØA=1,6 ØB=1,2</p>
---	---	---	---



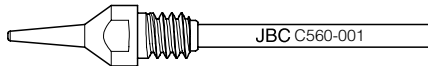
C560 Tips for DR360 Desoldering Iron

E 1:1



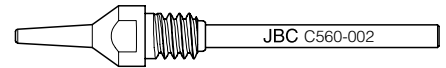
C560-001HT

$\varnothing A=1,4$ $\varnothing B=0,6$
 $\varnothing_{\text{max. pin}}=0,4$



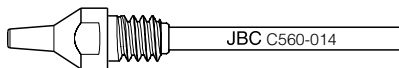
C560-002HT

$\varnothing A=1,8$ $\varnothing B=0,8$
 $\varnothing_{\text{max. pin}}=0,6$



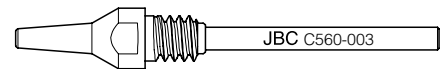
C560-014

$\varnothing A=2,5$ $\varnothing B=0,8$
 $\varnothing_{\text{max. pin}}=0,6$



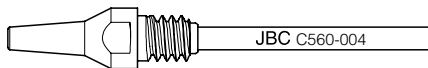
C560-003

$\varnothing A=2,7$ $\varnothing B=1$
 $\varnothing_{\text{max. pin}}=0,8$



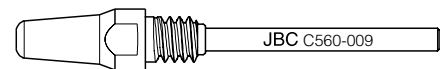
C560-004

$\varnothing A=3,2$ $\varnothing B=1,3$
 $\varnothing_{\text{max. pin}}=1,1$



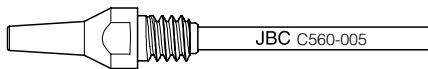
C560-009

$\varnothing A=5$ $\varnothing B=1,3$
 $\varnothing_{\text{max. pin}}=1,1$



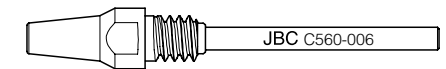
C560-005

$\varnothing A=3,4$ $\varnothing B=1,5$
 $\varnothing_{\text{max. pin}}=1,3$



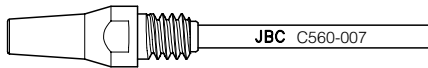
C560-006

$\varnothing A=4,2$ $\varnothing B=1,9$
 $\varnothing_{\text{max. pin}}=1,7$



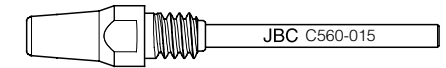
C560-007

$\varnothing A=4,8$ $\varnothing B=2,4$
 $\varnothing_{\text{max. pin}}=2,2$



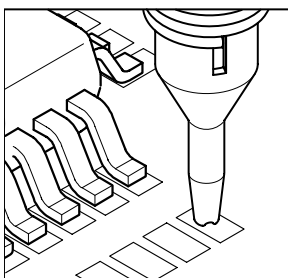
C560-015

$\varnothing A=5,2$ $\varnothing B=3$
 $\varnothing_{\text{max. pin}}=2,8$



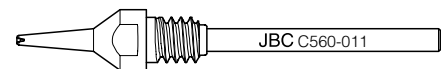
Standard pad cleaning tip for DR560 Desoldering Iron

The pad cleaning tips feature a distinctive contact surface slit which offers circulation of suction air for easy pad cleaning.



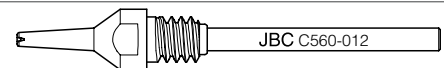
C560-011HT

$\varnothing A=1,4$ $\varnothing B=0,6$



C560-012HT

$\varnothing A=1,8$ $\varnothing B=0,8$



C560-013

$\varnothing A=2,7$ $\varnothing B=1$

